

THE



BOURTON BUGLE

LOCAL NEWS, VIEWS AND INFORMATION FOR THE RESIDENTS OF BOURTON-ON-THE-HILL



**SPRING
2024**

WELCOME!



Welcome to the first Bugle of 2024, and the first since we took over as editors from Ailsa Vigrass.

We want to take this opportunity to thank her once again for the huge contribution she has made to the village through editing, printing and distributing the Bugle for the last 14 years; she will be a hard act to follow!

It feels like Spring has finally sprung and the rain (at least as I type!) has stopped for a little while. There is lots to look forward to; thank you to all the contributors who have shared upcoming events.

One important event we would like highlight is the **Annual Parish Meeting on Tuesday May 7th at 7.30pm** in the Old School, following the Parish Council Meeting at 6.30pm. This is a fabulous opportunity to hear from the local organisations about the work they have been doing over the past year. It's also your chance to have your say about anything you consider important in the parish. We hope to see you there.

Lastly we are asking local businesses if they would like to help sponsor the printing of the Bugle through purchasing advertising space in future editions. If you are interested please do get in touch.

Alice & Anna

Cllr.sorby@bourtononthehill.org.uk
Cllr.stanley@bourtononthehill.org.uk

Dates for your diaries:

April 2nd Bourton House Garden reopens	April 27th Rural Cinema	May 25th Rural Cinema
April 20th Old School Hall: Coffee Morning 10am—noon AGM, 12 noon	May 7th Annual Parish Meeting 7:30pm	June 2nd Open Gardens
April 22nd Willow workshops at Bourton House	May 11th & 12th Village Flower Festival	June 22nd Coffee Morning
	May 18th Coffee Morning	June 29th Rural Cinema
	May 25th Village Tidy Up	July 20th Coffee Morning
		July 27th Rural Cinema

BOURTON-ON-THE-HILL TELEPHONE BOX

Late last year, Helen, a researcher engaged in a project focusing on telephone boxes in the Cotswolds, reached out to the Parish Council. She was seeking information about our telephone box for inclusion in a compilation of records of BT phone boxes in the area. Thanks to the help of village residents, we were able to provide her with a variety of information:

The phone box, situated on Rectory Lane, is still operational, albeit showing signs of weathering. Following a suggestion from one resident, it has been included in BT's maintenance schedule for 2024. Already, the missing glazing panel has been repaired and a new coat of paint is promised. Despite its slightly faded appearance, the phone box remains a popular attraction for passing tourists and walkers. Many stop to admire it, taking photographs and selfies against its backdrop.

Our box is a 'K6' model, designed by Giles Gilbert Scott in 1935 to commemorate the Silver Jubilee of King George V's coronation. It was one of 60,000 installed across Britain, with over 11,000 still standing today.

In 1988, our box received Grade II Listed status, preventing BT from removing it or the phone inside, and requiring them to handle its maintenance. Approximately 12 years ago, BT offered to sell the telephone box to the Parish Council for a symbolic £1, but the offer was declined. Unfortunately, no compelling alternative plan for its use emerged. Despite discussions about potential purposes such as a defibrillator location, lending library, information point or delivery drop-off point, none of the ideas were met with enthusiastic support.

It also holds special memories for those who have spent many years in the village, *"It's been there most of my life. In that area, it was where we played in evenings. Courting was achieved by using that phone box!"*



If you have any further information or anecdotes, please get in touch so that we can enjoy them and pass them on to Helen.

Anna Stanley

ST LAWRENCE'S CHURCH

As many will have noticed, we now have a toilet building with disabled access just outside the South Porch. The rural dean, Rev. Katrina Scott, came to preach at our harvest service when we gave thanks for the gift of water, marking the culmination of many years of fundraising and work on the project; we are grateful to all who have contributed. The new facilities have greatly improved the welcome we are able to offer people. Both the toilet and church are open during daylight hours.

At Christmas we welcomed the village baby and toddler group to hear the Christmas story and see the crib, and, on Christmas Eve, we held the annual service of carols and readings, followed by mulled wine and mince pies. This year we were taken by surprise as people kept arriving - 120 in total! There was good humoured sharing of service sheets and it proved a very joyful occasion; somehow the refreshments went round, with a little left over.

For now, we are looking forward to Spring and to celebrating Easter. This will be followed by a village flower festival on the weekend of 10th - 12th May, with flowers, music and refreshments in church. This will be accompanied by a display about how and why we are continuing to encourage biodiversity in our churchyard. Please put this in your diaries, we hope that as many people as possible in the village will get involved.

Naomi Morris

Upcoming services and events at St. Lawrence's Church

Sunday 24th March

Palm Sunday
11:15am Holy Communion

Friday 29th March

Good Friday
2pm - 3pm The Last Hour
(a service of reflection)

Sunday 31st March

Easter Day
11:15am Holy Communion

Sunday 7th April

2nd Sunday of Easter
6:00pm Evening prayer in
traditional language (BCP)

Sunday 14th April

3rd Sunday of Easter
11:15am Holy Communion

Sunday 21st April

4th Sunday of Easter
11:15am Holy Communion

Sunday 28th April

5th Sunday of Easter
11:15am Holy Communion

Sunday 5^h May

6th Sunday of Easter
6:00pm Evening prayer in
traditional language (BCP)

Saturday & Sunday 11th & 12th May

VILLAGE FLOWER FESTIVAL

Sunday 12th May

7th Sunday of Easter
11:15am Holy Communion

Sunday 19th May

Pentecost (Whit Sunday)
11:15am Holy Communion

*For families with young children, a
reminder that there is an all-age
"Open Door" Service at Blockley
church on the first Sunday of the
month at 9:30am.*

**[www.achurchnearyou.com/
church/14287](http://www.achurchnearyou.com/church/14287)**

THE OLD SCHOOL

Grant Funding

Things have been looking really positive at the Old School Hall. We are delighted to announce that we have secured a Community Infrastructure Capital Grant from the UK Government's Rural England Prosperity Fund of £5,236 towards the cost of replacing all the internal and external lighting with LEDs. In addition to modern, more attractive lighting, this will reduce our energy bills and contribute to Cotswold District Council's commitment to greener energy. The grant covers nearly all of the installation costs.

Additionally, the Old School has just received a further grant from the Co-op to buy coffee machines and pods. This means we'll be able to offer FREE COFFEE at our monthly coffee mornings!

Hall Bookings

Hall bookings have improved. We now have regular bookings for Ballroom Dancing, Toddler Group, Bridge and U3A Scottish Dancing, as well as occasional bookings for a childminder, a yoga group and rehearsals for Longborough Festival Opera and The Campden Chorus. The hall has also been the venue for a number of fabulous parties, family get-togethers and other events. If you would like to make use of the facilities, hall hire is £10 per hour for village residents and £12 per hour for non-residents. To book, please see the website or contact Sandra Gee on **01386 701385**.

Christmas Events

We enjoyed a variety of successful Christmas events at the end of last year. The Christmas Wreath Making workshop was greatly enjoyed by those attending. Christmas Carols with the Blockley Blokes Choir on 15th December in St Lawrence's Church was well attended and all enjoyed the performance, mulled wine and mince pies. The following evening we held the Village Christmas Party in the Old School Hall with a festive meal and entertainment, including a Christmas themed musical quiz ... which got quite competitive!



THE OLD SCHOOL

Rural Cinema

Rural Cinema continues on the last Saturday of the month, although in March it was rescheduled for the 23rd to avoid the Easter weekend. So far this year we have enjoyed "The Unlikely Pilgrimage of Harold Fry" and "The Great Escaper". "A Haunting in Venice", with Kenneth Branagh as Hercule Poirot, is set for March. Our next film, on 27th April, will be "One Life", telling the true story of Sir Nicholas 'Nicky' Winton, a young London broker who, in the months leading up to World War II, rescued 669 predominantly Jewish children from the Nazis. Doors open at 6.30pm with the film starting at 7.15pm. Tickets are £5 on the door. As always, delicious hot dogs and a donation bar will be available .



Coffee Mornings



Our monthly Coffee Mornings are proving very popular with residents of all ages. We provide croissants, cakes and a hot drink while folk enjoy a chat with friends and neighbours and the children get together to play. The next Coffee Morning will be Saturday 20th April from 10am to 12 noon.

Annual General Meeting

The Annual General Meeting of the Old School Hall will be held on Saturday 20th April at 12 noon, following the coffee morning. All village residents are invited to attend. We hope to see you there; we would love to hear your ideas for the future of the hall.

Village Open Gardens

The 2024 Open Gardens event will take place on Sunday 2nd June. A number of village gardens and Bourton House Garden will be open to the public from 1pm to 5pm. As usual, teas and cakes will be served in the Old School Hall. Parking will be available at Bourton House.

It is good to have a variety of gardens open and new gardens are especially welcome. In recent years, fewer gardens have opened, so we hope more will consider doing so. It is a great way to get your garden ready for summer and have all your hard work admired.

If you are willing to open your garden, please contact:
Anne Robertson on **01386 701564**
anne.robertson1304@gmail.com

If you are able to help with teas, please contact Catherine Firth on **01386 700939** and, to help with car parking at Bourton House, contact Philip Gee on **01386 701385**.

Anne Robertson



VILLAGE TIDY UP

Saturday 25th May

Please join us for the annual spring tidy up.
Meet at 10am in the Old School car park,
or focus near your own home.

Litter grabbers, bags and hi-viz
jackets available



Weeding. Pruning, Litter picking, Cleaning

BABY & TODDLER GROUP

Join us every Monday during term time, 9:30 am to 10:45 am, downstairs at the Old School. We're a friendly bunch, welcoming babies, toddlers and pre-schoolers (up to 4 years old), from both Bourton-on-the-Hill and further afield.



Our room is well stocked with toys and equipment for each stage of development. Plus comfy seating for parents and carers; the perfect spot to meet new people, enjoy a drink and relax. No need to book—just turn up. £1.50 per child, adults free, with refreshments included. See you there!

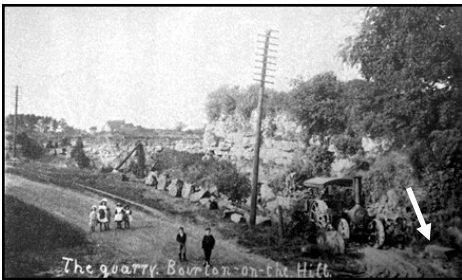
DALES TALES

Robin Dale has lived in Bourton-on-the-Hill all his life, since the late 1940s. If you have ever had the pleasure of meeting him, you will know that he is a mine of local information and facts. His ability to recall names and details is incredible, so with that in mind, we thought it would be nice to share some of his insights over the next few editions of The Bugle. As well as recalling personal experiences, he has gathered a wealth of knowledge through research, listening to others and reading his late father's diaries - Ken was the tenant farmer at Manor Farm from 1945, a thriving business that Robin continues to this day.

Bourton-on-the-Hill Quarry

Cotswold stone was discovered by the Romans, who used it for the construction of towns and cities throughout the area, marking the beginning of its use in architecture. Since then, it has continued to be a versatile and durable building material, both internally and externally. The Oolitic Jurassic Limestone was formed between 206 and 144 million years ago when the Cotswolds region was submerged under a warm sea. This distinctive honey coloured stone formed as layers of shell fragments accumulated over time on the bottom of the seabed.

It is hard to believe that this area was once covered by sea, but fossils of sea urchins, scallops and sea snakes can still be found locally, especially in a 2 acre section of field close to Troopers Lodge. Due to stones being moved around to create farm track, examples of these can be seen on Dale's Farm. Locals have collected them; indeed Church House has sea urchin fossils forming a decorative pattern on the gable end roof line.



The Quarry at the top of Bourton on the Hill was in use from around 1400 until World War 1. After this time, the Batsford Estate continued to crush the remaining stone for lime, for use on the land as a form of ph. balancer. Evidence

of the quarry still remains visible, especially opposite the junction at the Longborough turn. The large stone, indicated in the photograph, remains in the same spot.

At one time, the 'Quarry Café' stood on the site of the current bungalow next to the petrol station. Robin believes the building was originally positioned at Troopers Lodge but was then relocated and repurposed as a roadside café in Bourton-on-the-Hill. He recalls visitors could enjoy a traditional fry up. It was run by Brummy Smith & Biddy Marks, who ran the business after the war. (Photo c.1950)



When the Mini was launched at the end of the 1950's, Bourton-on-the-Hill was on one of the trial routes from Coventry. Drivers would stop at the café, rewarding Robin with his first sighting of the iconic car, with its tiny 18" diameter tyres. Later, Mr Prophet, who owned the newly built petrol station, demolished the old café and had the 'The Bungalow' built in its place.

After the closure of the Quarry, a gentleman known as 'Trammy Tramp' lived in one of the caves, with his wife sleeping in another. In the summer months, they moved to two other caves in the Longborough Quarry, closer to Mr Stoke's fruit farms, where they helped on the land.

One of the Quarry Masters, Mr Gill, lived in Llansannor, a house situated in the middle of the village. Around 1910 he remodelled the property, adding additional architectural details to display and advertise his stone masonry skills. He also bestowed the house with its current name, in memory of his honeymoon destination in Wales.



Robin & Anna

PARISH COUNCIL

Improving Safety

The Parish Council has had another busy few months. We always appreciate village residents approaching us with ideas or concerns, and we endeavour to do our best to resolve issues.

Overhanging vegetation has proved problematic in recent months, impacting both road users and pedestrians. The school double decker bus was affected by overhanging branches, and with Parish Council support, Highways pledged to cut back the trees and verges along the route.



Additionally, the turn towards Blockley was becoming increasingly dangerous for pedestrians and dog walkers. We are very grateful to the owners of Endersleigh for giving us permission to prune the bushes on the corner (thank you also to Nathan at Clarke Construction for providing safety barriers and a truck to remove the larger branches, and to the Gees for the use of their green bin!). Visibility and safety have

been significantly improved.

The village survey highlighted that overgrown vegetation causes the pavements on the main road to become narrow and challenging to navigate. This serves as a reminder to all of us to be mindful of our gardens' impact on the safety of those walking past. If your house is one of those on the main road, please ensure any overhanging trees/bushes, or plants growing in the walls, are cut back to avoid blocking the narrow pavements.

The Parish Council have once again asked Highways to clear the pavement between the Horse and Groom and the Longborough turn; this section requires regular maintenance to make it useable and less hazardous for pedestrians.

Village Survey

The Parish Council would like to thank all residents who took the time to participate in the 2023 village survey. We were delighted with the valuable feedback and information contained within the responses. As a reminder, we received over 45% response rate within the village. To read a summary of the results, please scan the QR code below or go to the "Documents" section of the Parish Council website. The summary document includes a brief analysis and interpretation of the data received, and some initial actions for the Parish Council to pursue as a result. More detailed discussion will be required for some issues, and further actions will be agreed during future Parish Council meetings. We have also included a copy of the original blank questionnaire. If you have any questions after reading the summary of results, please contact us via the website contact page and we will be happy to respond.



Community Speed Watch

In addition to the ongoing work regarding the installation of speed cameras along the A44, the local Speed Watch group will be starting again as soon as we can find a suitably dry/drier spell in which to operate. The group has secured a second hand-held speed camera, which means that we can now run checks in two locations simultaneously. In addition, we have just become the proud owners of a decibel meter. The purchase of this machine has been made with a view to collecting data so we can argue for a better solution to the problems caused by traffic on the



A44; the increase in noise from lorries and motorbikes (particularly on sunny weekends) is a constant nuisance to residents.

Communication

From time to time, we receive valuable email messages and surveys from the county & district councils, as well as other organisations, to pass on to residents. Currently, these are added to the News section on the website and sent out via the village email service. If you would like to be kept up to date with such correspondence, please consider signing up for email alerts if you haven't already done so, via the website, or by providing any of the Council with your email address.

Parish Council News

The final Parish Council Meeting for 2023 began with a 'Meet & Greet.' Many thanks go to all the residents who joined us for an opportunity to chat over a drink; connecting with so many of you was a pleasure. We want to emphasize that residents of the parish are always welcome at our meetings, which start at 6:30pm in the Old School hall. Mark your calendars with the upcoming dates: May 7th, followed by the Annual Parish Meeting at 7:30pm, July 9th, September 12th, and November 26th. Your presence and support are always valued. We have recently welcomed three new Parish Councillors to the team—David Buck, Luke James and Nigel Lidster. We are incredibly grateful to them for offering their time and expertise to support the village.

Footpaths

Although the recent spells of appalling weather have kept some of us indoors, with the approach of Spring, many will be looking forward to once more exploring the network of local footpaths. Over the last few years, it has been noticed that incidents of dog fouling have been on the increase, particularly on the route south towards Sezincote. With a view to combatting this, we have now secured a collection of notices from Cotswold District Council reminding dog owners to clean up after their dogs. These will soon be appearing on local fenceposts, gates and styles; we hope everyone will see an improvement in the situation.



Website News

As you are aware, the new Parish website launched last year. Our commitment to its enhancement is ongoing, and we're actively working on improvements. In addition to the incorporation of transportation details, such as local train and bus timetables, there is now a comprehensive list of local taxi services. Within the *Directory*, the *Services* section highlights many businesses within the parish, providing an excellent opportunity to support local organisations. If your business is not yet featured, please reach out with your details. Scan the QR code to uncover the diverse range of enterprises right on your doorstep. Furthermore, if you would like to advertise in the Bugle, please get in touch.



Contact:

To raise concerns or to discuss issues with the Parish Council, please see the website for individual contact details, or email the Clerk, Kevin O'Donoghue.

 www.bourtononthehill.org.uk

 clerk@bourtononthehill.org.uk

The Parish Council

EDUCATIONAL TRUST

Are you under 25 and want to learn a new skill? Go on a trip? Have some help paying for school uniform or sports kit? The village's **Educational Trust** gives grants to help with the cost of these. It's very easy to apply.

For more information,
please see our website page
[bourtononthehill.org.uk/
educational-trust/](http://bourtononthehill.org.uk/educational-trust/)

Catherine Firth



BRIDGE CLUB

The North Cotswolds Bridge Club currently meets most Wednesday afternoons in the Old School Hall, for Gentle Duplicate Pairs games.

We have an extremely social atmosphere, enquire for details from the host, or check the website for further details:

www.bridgewebs.com/northcotswolds

Alan: **07946 253203**



Advertise

YOUR Business

HERE

COMMUNITY CONNEXIONS

This valuable bus service is looking for more customers—could they help you?



Community
Connexions



BUS SERVICE

SHOPPER ROUTES

- Tuesdays Moreton-in-Marsh (market day)
- Thursdays Stow-on-the-Wold (market day)
- Pre-bookable collection from your door
- Bus passes accepted

GROUP HIRE

- Door to door pre-bookable service
- Collect group members and drop them to club
- Hire the bus and driver for special trips

CALL OR EMAIL TO BOOK

0345 680 5029

info@communityconnexions.org.uk

www.communityconnexions.org.uk

"My husband and I suddenly stopped driving last year and find this door to door bus service vital.

We greatly appreciate Angie, our cheerful and helpful driver, who takes us from our home in Bourton on the Hill.

Shopping, prescriptions, Aldi, Tesco and even cups of coffee are all possible and we are home just after midday. It is even free to bus pass holders with disabilities."

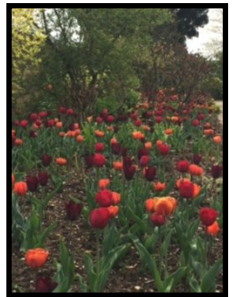
Lorna Fawcett

BOURTON HOUSE GARDEN

Well, where did that 6 months go? It seems only 5 minutes ago we were lifting and wrapping the tender plants and closing down the Barn. We are gearing up towards our April opening and can't wait to see you all. We are once again running our "pop-up" café in April, serving homemade cakes and tea/coffee before Carolyn returns to open the Café fully at the beginning of May.

Our first day will be Tuesday 2nd April from 10am. Thereafter we will open every Tuesday to Friday 10am until 5pm, excluding bank holidays through until the end of October. Our café and shop will open from May onwards.

April is still all about the tulips!



The tulips create such a welcome splash of colour. We plant around 3,000 tulips of many different varieties so there is something for everyone. Do come along and see for yourself.



Over the Winter Sandra has moved on to spend more time with her family, and we wish her all the very best.

We look forward to you meeting our new team member – Adam - who joined us in February. He has been working at Sezincote, just across the fields from here, for the past year, and is already working with Glenn on the higher ladder duties!



Friends' cards are now on sale!

If you like to visit often to experience the garden evolving through the seasons, you might want to consider purchasing our 'Friends of Bourton House Garden' season tickets. They cost £30 and offer you unlimited entry to the garden from April through until October. Come as often as you like! Please email Julie at **info@bourtonhouse.com** for more details.

We will look forward to seeing you all again soon.

NORTH COTSWOLD FOODBANK

Post Christmas and early spring is a time for stock taking and implementing the lessons learnt from our very busy seasonal periods. We do expect to become very busy again around Easter and the school holidays when children who would have a hot meal at school are at home putting extra strain on family finances. We continue to work closely with our partners at the Citizen Advice Bureau (CAB) who have their advisers available at our outlets every week. By providing help and advice it is the hope and intention to make sure that our clients have the best help so that in time they will no longer need a foodbank.

Signposting our clients to agencies who can provide expert help is all part of our commitment to the community in these difficult times; a foodbank should not become a sticking plaster or an excuse for not dealing with the important issues that force people to rely on a foodbank.

As a charity we have been privileged to appoint four new trustees, all recently retired from very successful careers in varied fields. This reflects the growing work and responsibility we have in the community.

If there is anyone in need, they are encouraged to look at our website to see the best way to access emergency food parcels, and also there is an up to date list of our needed donations and shortages at the warehouse in Guiting Power. **www.northcotswold.foodbank.org.uk** or call 07879 375562