

THE

Bourton  **BUGLE**

LOCAL NEWS, VIEWS AND INFORMATION FOR THE RESIDENTS OF BOURTON-ON-THE-HILL

SPRING 2023



The Coronation Wood, Bourton Allotments

- The Old School Hall re-opens
- Easter church services
- Open Gardens – Sunday 4th June
- The Coronation Wood
- A call for good neighbours from Sezincote Farm
- And more!



Welcome to the spring Bugle. In this edition I'm delighted to celebrate two villagers who are recognised as top experts in their respective fields.

Firstly, congratulations to Dawn Childs of Glebe House, FREng and President of the Women's Engineering Society.



Dawn was recognised for her services to Engineering in the 2023 New Year's Honours list and made Dame Commander of the Order of the British Empire DBE. Many congratulations Dawn!

Congratulations are also due to Robin Dale of Manor Farm, who some of you may have spotted in Episode 6 of the latest series of 'Clarkson's Farm'. A former President of the Hedge Laying Society, Robin appeared as the judge of 'The Diddly Squat 2022 Hedgelaying Competition' filmed at Jeremy Clarkson's Chadlington farm in February last year.

Thirty-two experienced competitors were



required to lay a hedge 288m long, divided into lengths and each dedicated to a particular regional style (there are over 50 recognised styles in the UK). Six hedge layers worked on one of these styles and after five hours cutting

time each style was judged and awarded first to third positions. The overall winner on the day was then chosen from the class winners. Robin assessed Jeremy and Kaleb's own efforts as 'very well done'. The judging aside, Robin particularly appreciated the unscripted recording and confirmed that the dialogue and rapport viewers see are spontaneous and genuine. Robin has been taken aback at the public recognition his appearance has generated. Congratulations Robin!

Ailsa Vigrass

ST LAWRENCE'S CHURCH

Forthcoming Services at St. Lawrence



We would very much like to invite everyone to join us for all or some of the following services:

- Sunday 19th March **Mothering Sunday**
11:15am Holy Communion
- Sunday 26th March **Passion Sunday**
11:15am Holy Communion
- Sunday 2nd April **Palm Sunday**
6pm Evening Prayer
- Friday 7th April **Good Friday**
2:00pm Last Hour at the Cross
- Sunday 9th April **Easter Day**
11:15am Holy Communion
- Sunday 16th April **Easter 2**
11:15am Holy Communion
- Sunday 23rd April **Easter 3**
11:15am Holy Communion
- Sunday 30th April **Easter 4**
9:30am Service in Blockley
Holy Communion
- Sunday 7th May **Easter 5**
6pm Evening Prayer
- Sunday 14th May **Easter 6**
11:15am Holy Communion
- Sunday 21st May **Easter 7**
11:15am Holy Communion
- Sunday 28th May **Pentecost**
11:15am Holy Communion



Sunday 4th June **Trinity Sunday**
6pm Evening Prayer

Sunday 11th June **Trinity 1**
11:15am Holy Communion

Sunday 18th June **Trinity 2**
11:15am Holy Communion

Sunday 25th June **Trinity 3**
11:15am Holy Communion

We very much look forward to welcoming you.

Philip Gee

PARISH COUNCIL

Highways

The road beside the Old School car park has been fully resurfaced. In Keytes Lane most of the potholes have been filled in with temporary repairs so let's hope they last. We now need to push for repairs to the potholes in Back Lane and also those at Fenhill Close. Anyone can report potholes to Gloucestershire Highways on their website using this link: <https://www.gloucestershire.gov.uk/highways/roads/your-highways-report-it/>



Our on-going discussions with Gloucestershire Council and Gloucestershire police continue to install the new fixed in place community speedwatch cameras. We now have funding approved for two cameras, one for each end of the village. The next step is to have a meeting with the police which should be in the next few weeks.

Highways have painted white lines in the pinch point with some dragon's teeth markings. It has taken a long time to get these painted, hopefully they will help encourage some drivers to drive more slowly.



The Coronation Wood

Gloucestershire County Council are committed to planting a million trees around the county to compensate for the losses to Ash die-back and also to help the climate. Thanks to the efforts of our clerk, Kevin O'Donoghue, and Councillor Tom Dixon we've just received our delivery of around 50 native tree saplings and associated stakes for planting. These are being planted next to the Community Orchard to create a mini woodland, which will be called The Coronation Wood in honour of the forthcoming coronation of King Charles III.

The shipment includes a splendid range of tree varieties. The bare root half standard size trees include English Walnuts, Sweet Chestnuts, Common Beeches, Apple Trees (Beauty of Bath, Braeburn, Evereste), Plums (Marjorie's Seedling, Victoria), Conference Pear, Doyenne de Comice Pear, Pear 'Williams Bon Chretien', and an English Oak



tree. There were also whips of Common Hawthorn and Blackthorn (i.e., Sloe).

Thanks to Tom Dixon who organised the first planting session on Sunday the 12th March. This photo shows Tom & Andy with one of the

English Walnut trees now in its new home.

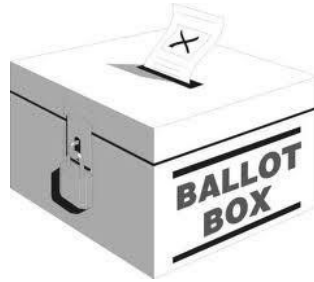
Millennium Wood

A fallen tree had damaged the fence at bottom end of the wood, this has now been repaired.



Elections

Cotswold District and Parish elections will be held on Thursday 4th May 2023. All district, parish and town councillors will stand down and elections will take place to replace them.



Anyone wishing to stand as a candidate must submit a nomination paper to the Returning Officer at Cotswold District Council between Monday 20th March 2023 and the deadline of 4pm on Tuesday 4th April 2023.

Councillors

The Parish Councillors are Andy Vigrass (Chairman), Liz Bowden (Vice Chairman), Tom Dixon, Tom Martin, Michael Neil, Mark Norton & Anna Stanley. The Clerk to the Parish Council is Kevin O'Donoghue.

Phone & Email



The phone number for contacting the clerk: 01386-854830



The clerk's email address is clerk@bourtononthehill.co.uk

Kevin O'Donoghue & Andy Vigrass

THE OLD SCHOOL

The Old School Hall has had a difficult time since mid-December when the boiler broke down. Prior to that we had been doing well with regular bookings, monthly film nights and village events. On Friday 11th November, we held our Meet the Neighbours 3, Cheese and Wine evening which was attended by 30 people including some new village residents. Our Christmas party on 9th December was also popular with mulled wine and supper, a raffle and entertainment including carols,



songs and a highly competitive Countdown game.

We were fortunate to hold these events before the boiler stopped working which effectively closed the hall for 2 months. The Toddler group managed to continue weekly meetings downstairs with additional heaters and the Scottish dancing group continued through January and February but all other groups found alternative venues. Sadly, most are not returning.

Following a number of delays and attempts at fixing the boiler we had a new boiler installed on 22nd February at a cost of £4000. We are grateful to all those who have given generous donations to help with this unforeseen expenditure.

The **Annual General Meeting** of the Old School Hall will also be held on 25th March at 10am in the Old School. All village residents are invited to attend. We hope to see many of you there and would love to hear your ideas for the future of the hall.

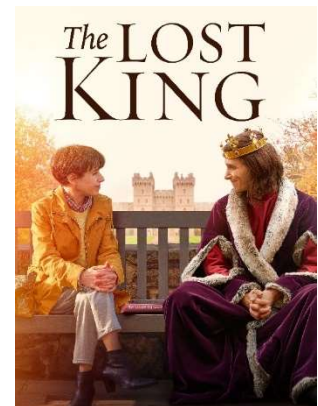
Rural cinema

Rural cinema resumed on 25th February, when 35 people enjoyed the warmth in the hall while watching the film Operation Mincemeat.



On Saturday 25th March we will be showing 'The Lost King' about the finding of the remains of Richard III in a car park in Leicester.

Tickets are £4.00 on the door. Doors open at 6.30 pm and the film starts at 7.15pm. Hot dogs and a donations bar are available.





Village Open Gardens Sunday 4th June

A number of village gardens and Bourton House Gardens will be open to the public. Allen and Catherine Firth's Arts and Crafts garden at Porch House is celebrating 100 years since it was designed. There will be displays and photographs showing the garden over the past century.



Tea and cakes will be served in the Old School Hall.

It is good to have a variety of gardens open and new gardens are especially welcome. If you are willing to open your garden and have all your hard work admired, please contact Anne Robertson 01386 701564 or anne.robertson1304@gmail.com

If you can help with teas please contact Catherine Firth 01386 700939 and to help with car parking at Bourton House, contact Philip Gee 01386 701385.

*Anne Robertson
(on behalf of the Old School Hall Committee)*

COMMUNITY SPEED WATCH

It takes a village!

Residents may have noticed a hiatus in CSW monitoring which is the result of a combination of factors, including availability of volunteer time, unappealing weather (!) and a desire to wait for new white lines to be painted on the road, so we could measure what impact this had on driving through the village.



We're planning on resuming checks now and want to remind the village that:

- Both CSW now has **two** speed guns & plenty of high-vis kit so we intend to run checks at both ends of the village.
- Anyone already on our CSW volunteer list will be contacted about availability for monitoring from end of March.
- We can always use more volunteers, so do drop us a line if you'd like to help.
- No prior experience or equipment is required to take part!
- And you don't need to commit to a regular slot to volunteer for CSW.

The unique driving conditions in Bourton on the Hill make antisocial driving and "casual" speeding a significant threat to safety & quality of life in the village. CSW supplies data to the police which enables Both to receive more *actual* police monitoring and also reminds drivers of the issue of speed. Without the data, the police won't attend to carry out checks. It would be fantastic if more members of the community could own this responsibility – it takes a village!

Adrian and I have our hands very full at the moment, so we are also more than happy to organise CSW kit for any volunteers wishing to run checks when we're unavailable. If you want to get more involved, please do get in touch.

Camilla & Adrian Chandler
Camillachandler2018@gmail.com



BOURTON HOUSE **GARDEN**

Now that evenings are getting noticeably lighter, with snowdrops out and daffodils starting to break through, it feels like Spring is not too far away! We've certainly had a few brighter days of late which is very welcome.



We are gearing up towards our April opening and can't wait to see you all again. Following the success of our "pop-up" café in October, once the Tithe Barn closed for the Winter, we have decided to run "pop-up 2" in April. So, until Carolyn and her team return to open fully, you will be able to enjoy tea/coffee and homemade cakes any time we are open.

Our first day will be Tuesday 4th April from 10am. Thereafter we will open every Tuesday to Friday 10am until 5pm, excluding bank holidays through until the end of October.

April is all about the tulips!



Don't forget that for the month of April, entrance is just £7 per person and the tulips create such a welcome splash of colour. We plant around 3,000 tulips of many different varieties so there is something for everyone.



We are excited to announce that we will be holding an Art Exhibition here at Bourton House in the Tithe Barn for the first time post pandemic in June.

'Just four + two' Summer Art Exhibition at The Tithe Barn 6th – 10th June 2023

Artists: Jenny Hill-Norton, Anthea Stilwell, Jo Ellis, Craig Narramore + Jane Martin and John Mackinlay

'Just Four Contemporary Artists' are a collaborative group of three painters: Jenny Hill-Norton, Anthea Stilwell, Jo Ellis and sculptor and furniture maker Craig Narramore. They are joined by + two fellow artists Jane Martin and John Mackinlay. This exhibition of recent work shows the vitality and range of subject matter and media they explore, creating a vibrant exhibition.

"There is a collective energy when we are together and our work is created for the sheer pleasure of painting" says Jenny who co-founded the group with Anthea. This creative collaboration has made them brave and free to take risks which is releasing for them and produces exciting results. Their work is individual and expressive but connected by the



vitality and energy linking the group. Their subject matter ranges from gardens, flowers, still life, figures, landscapes and seascapes created in a variety of media, including: oils, acrylics, watercolours and collage with charcoal drawings and studies on show as well.

All work on show is for sale with a percentage of sales donated to the charity Well Child.

Please come along and have a look.

Friends' cards are now on sale!

If you like to visit often to experience the garden evolving through the seasons, you might want to consider purchasing our 'Friends of Bourton House Garden' season tickets. They cost £27 and offer you unlimited entry to the garden from April through until October. Come as often as you like! Please email Julie at info@bourtonhouse.com for more details.

We will look forward to seeing you all again soon.

Best wishes from all at Bourton House Garden

Julie, Bourton House Gardens

THE EDUCATIONAL TRUST

Are you under 25 and need some help funding some activities - uniform/kit, books/equipment, clubs or school trips, for instance? The village Educational Trust can help with grants towards the costs of these. Please see our page on the village website for more information.

<https://bourtononthehill.co.uk/educational-trust/>



Dr. Catherine Firth
Chair of Trustees
catherinefirth54@gmail.com

SHEEP WORRYING, SEZINCOTE FARM

I'm sorry to have to report that we've had another dog attack on our sheep in a field adjacent to the houses in Bourton on the Hill. Sam, our shepherd, came across them very shortly after the incident at just before 8am last weekend and found the whole flock in great distress bunched up in a corner. One ewe had to be shot immediately it was in such a state – the animal had literally been eaten whilst trying to get away. Another ewe is struggling to survive, it is in the barn now, but the shock, as well as its injuries are likely to kill it, I'm afraid. Many of the others have had wool torn from them, nicks in their ears. These are the physical scars, but the stress will show up in other ways.

Luckily, relatively speaking, this group are not in-lamb. Last year's attack was on a group of pregnant ewes and that led to all sorts of issues further down the line – a couple died giving birth to dead twins that had probably been dead inside then since the attack, several 'slipped' their lambs in the following weeks, and we had more singles than usual, probably due to the ewes losing one of their twins after the attack.

Although a dog will not necessarily physically attack every ewe, the act of chasing and attacking just one or two is enough to stress the entire flock, increasing the likelihood of such incidents. There is a financial implication to incidents like these, but to be honest, for Sam and for me, it is the welfare issue that is of more concern. It is extremely upsetting to find animals in this state and all due to the carelessness and lack of responsible behaviour of some dog owners. We have many footpaths criss-crossing the farm and try to keep them in good order and well signed. We have put up fences to protect walkers from our cattle without fencing walkers in too much but there must be a recognition that this is a working farm as well as a public footpath.

I beseech everyone to be aware that any dog can chase sheep, be it a cuddly Labrador or terrier.



Sheep are flock animals and if one is alarmed, you will hear it ‘snort’ and the whole flock will rush off, triggering a ‘chase’ reflex in some dogs. Please, please can everyone make sure their dogs are under control when approaching a field of sheep, **and put the dog on a lead when you are in that field.**

I would also ask that if you see any loose dog chasing sheep that you try and take a photo with your phone and WhatsApp it to Sam or me. This will help us identify the dog so we can ask the owner to keep it under control in future.

We do speak to the police whenever we have an incident like this, I’m sure you have all read about the increase of sheep worrying in the press, and, whilst it is hard for them to do anything unless we have video footage of the incident, their advice was that we are within our rights to shoot the dog if it is actively chasing the sheep, and they will provide us with signs saying as much. Of course, we do not want to do this, but this is the official advice.

As the lambing season approaches for us, and we lamb outside, I really hope that everyone will help us keep the sheep safe and keep their dogs under control. Thank you.

Katharine Loyd
katharineloyd@gmail.com

Sam McPherson (sheep) 07787 832118
Simon McPherson (cattle) 07901 695089
Sezincote Farms, Sezincote, Moreton in Marsh, Glos GL56 9AW

NORTH COTSWOLD FOODBANK

The North Cotswold Foodbank has again been very busy over the Christmas and winter period. From March 2022 to February 2023 the Foodbank had provided 1359 emergency food parcels, last year in total was 764; an increase of 78% with 6 weeks to



go until the end of the reporting year. These food parcels have helped feed 4104 people this year so far, last year 2263 people were fed; an 81% increase on last year. We gave out 210 Christmas hampers with food, treats and crackers.

The Foodbank relies on the generous donations from the community, and we are very grateful for everything that we receive. Our donations come mainly via the regular permanent collection locations which now include Aldi in Moreton, the libraries at Moreton and Chipping Campden, Cotswold District Council office in Moreton, Tesco in Stow and Tesco Express in Moreton, the Four Shires Medical Centre, the Co-Op, 3 local schools and 2 coffee shops in Stow. Please check the website to see the latest donations request as this reflects the current shortages in the warehouse.

We have taken on a part-time manager for the warehouse in Guiting Power. The charity is certainly becoming more like a small business as it sees volunteer and client numbers increasing.

Confidential requests can be made to alexia@northcotswold.foodbank.org.uk or northcotswold.foodbank.org.uk/get-help.

Deliveries can be made to Bourton if transport is a problem.

Alexia Monroe
Chairman of the NCFB Trustees

THE NEXT ISSUE

.. is due out in July. Items for inclusion should be submitted to me by late June. Please either email me at the email address below or post items using the link on The Bugle page on www.bourtononthehill.co.uk.



Ailsa Vigrass
amvigrass@gmail.com