

# **THE** **Bourton** **BUGLE**

LOCAL NEWS, VIEWS AND INFORMATION FOR THE RESIDENTS OF BOURTON-ON-THE-HILL

## **SUMMER 2021**



- Services at St Lawrences
- Changes at the Parish Council
- Traffic survey results
- The Old School is back!
- And more...



Welcome to the summer edition of The Bugle. The following pages contain news of activities heralding a welcome return to something approaching normality - a big thank you to everyone who is working to support our community life by providing these.

*Ailsa Vigrass*  
[amvigrass@gmail.com](mailto:amvigrass@gmail.com)

### ST LAWRENCE'S CHURCH

By the time this edition of the Bugle is published St. Lawrence Church should have a mains water supply for the first time in its history! The necessary pipework from the church gate into the church was approved by



Thames Water some months ago and we have been waiting for them to give us a date for connecting the mains water supply to that pipework. We have now been told that the necessary work will take place between 31st August and 2nd September.

Once we are connected to the mains water supply we will be able to use the new sinks that have been in place in the vestry and at the back of the church for some weeks and it will no longer be necessary for the heating header tank in the ringing chamber to be topped up by hand! Also we will not have to bring hot water in a thermos flask to wash up the communion vessels every Sunday. It will also be much easier to serve refreshments in church after services and at other times such as at concerts.

We are now waiting to hear about when work will start on the next stage of our reordering plans which include disabled access and a toilet.

Following the changes to the Covid rules in July we are now moving back to our normal

pattern of services and the dates for the next three months are:

- Sunday 5th Sept - **Trinity 14**  
6pm Evening Prayer
- Sunday 12th Sept - **Harvest Festival**  
11:15am Holy Communion
- Sunday 19th Sept - **Trinity 16**  
11:15am Holy Communion
- Sunday 26th Sept - **Trinity 17**  
11:15am Holy Communion
- Sunday 3rd Oct - **Trinity 18**  
6pm Evening Prayer
- Sunday 10th Oct - **Trinity 19**  
11:15am Holy Communion
- Sunday 17th Oct - **Trinity 20**  
11:15am Holy Communion
- Sunday 24th Oct - **Bible Sunday**  
11:15am Holy Communion
- Sunday 31st Oct - **All Saints**  
9:30am Service in Blockley  
( Holy Communion )
- Sunday 7th Nov - **3rd Sunday before  
Advent**  
6pm Evening Prayer
- Sunday 14th Nov - **Remembrance Sunday**  
NB - Service starts at 10:50am
- Sunday 21st Nov - **Christ the King**  
11:15am Holy Communion
- Sunday 28th Nov - **Advent Sunday**  
11:15am Holy Communion

It would be wonderful if you could join us for any of our services. We very much look forward to welcoming you.

*Philip Gee*



## **PARISH COUNCIL**

There are changes ahead at the Parish Council, with the resignation of Councillor Davis in June and the retirement of our long-serving clerk, Alexia Monroe.

### **Retirement of the Clerk, Alexia Monroe**

Alexia has spent the last 16 years looking after the affairs of the Parish Council. This is not only a tremendously long innings, but she has also constantly gone beyond the call of duty, freely giving of her time to help the village. She has been the cornerstone of our Council, ensuring correct procedures are followed, managing all works undertaken and doing her best to keep us all under control. She has been a fantastic support and will be very much missed.

The search for a new clerk has begun, thankfully Alexia is staying in the village and will be available to help the new clerk for a smooth handover. An advertisement and job description are on page 10.

### **Resignation of Councillor Louise Davis**

Louise has served on the Parish Council since April 2014. She has always been generous in her thoughts and comments and especially concerned with the needs of the residents of Fenhill Close and speeding traffic. She will be missed by all of us on the Council.

To recruit a new councillor there is an advertisement and job description available on the CDC website and it is also available on the Bourton on the Hill website.

### **Highways - Traffic Survey**

Following our requests to help reduce traffic speeds, our County Councillor Lynden Stowe liaised with Gloucestershire Highways for them to carry out a survey of traffic volumes and speeds in Bourton on the Hill in June this year.



The survey was carried out between the 16th and the 22nd of June using automatic traffic counters connected to pneumatic tube sensors attached to the surface of the carriageway. The three locations were at the top of the village near the Blockley turning, at the pinch-point in the middle of the village by the church and just below the Fenhill Close junction.

The data from the survey will help in understanding our traffic issues and in identifying and supporting any potential traffic calming measures. The mean speed referred to is the measurement used nationally in assessments for speed limits.

The results are on the next two pages. They show that:

- most traffic is complying with the speed limit at the pinch point,
- traffic entering the village from either direction is driving over the speed limit before slowing at some point before reaching the pinch point, then accelerating on approaching their exit,
- speeding over the limit is more evident at the lower end of the village near Fenhill Close.

This survey focuses on the traffic volumes and their speeds. The other factor that has influences villager's experience of traffic speed is the narrow pavements, especially at the pinch point.

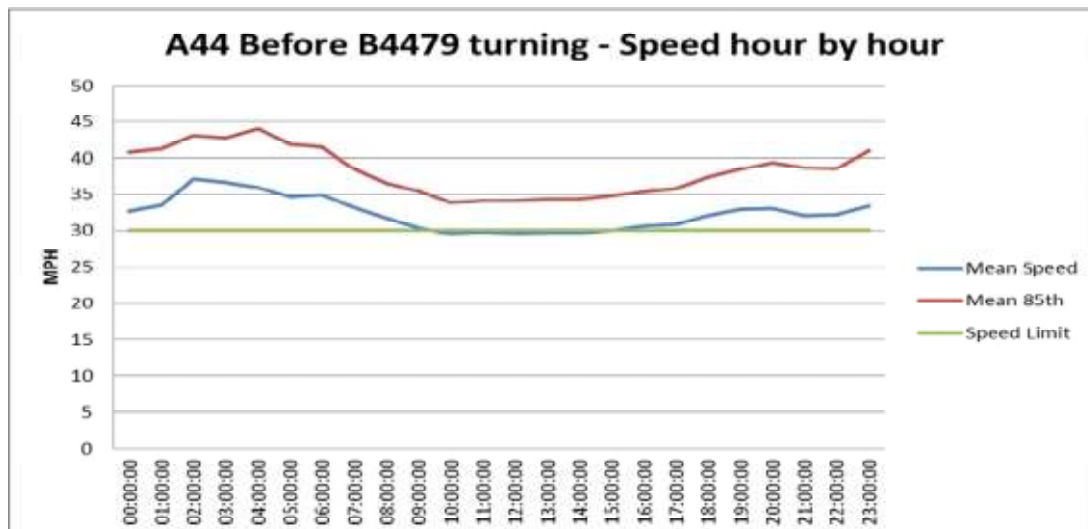
We will also want to include the very interesting data from the Community Speed Watch group in our discussions with Lynden Stowe and Gloucestershire Highways. (Please see their article later in this issue of the Bugle).

Lynden Stowe is following up with Gloucestershire County Council officers on the survey results and requesting their analysis from the survey.

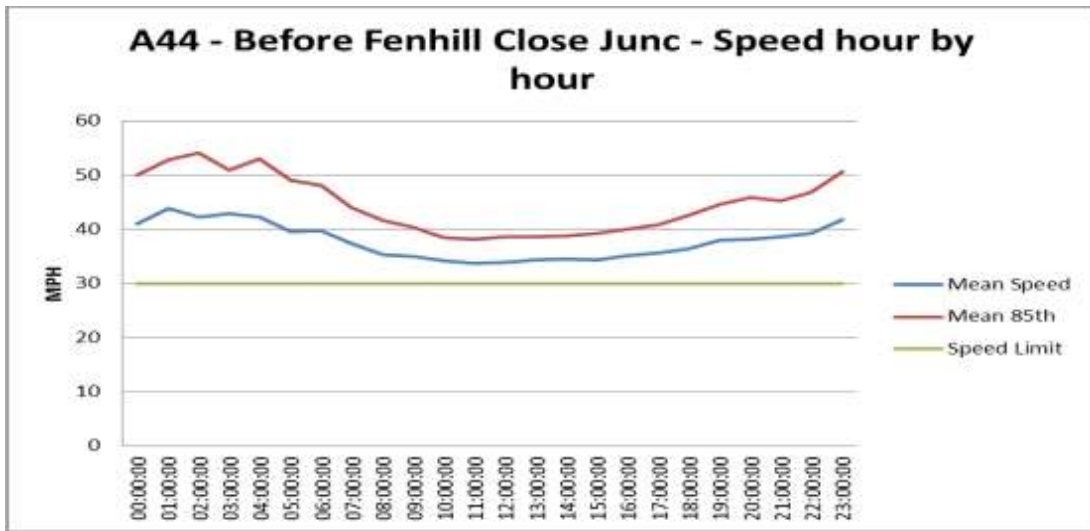
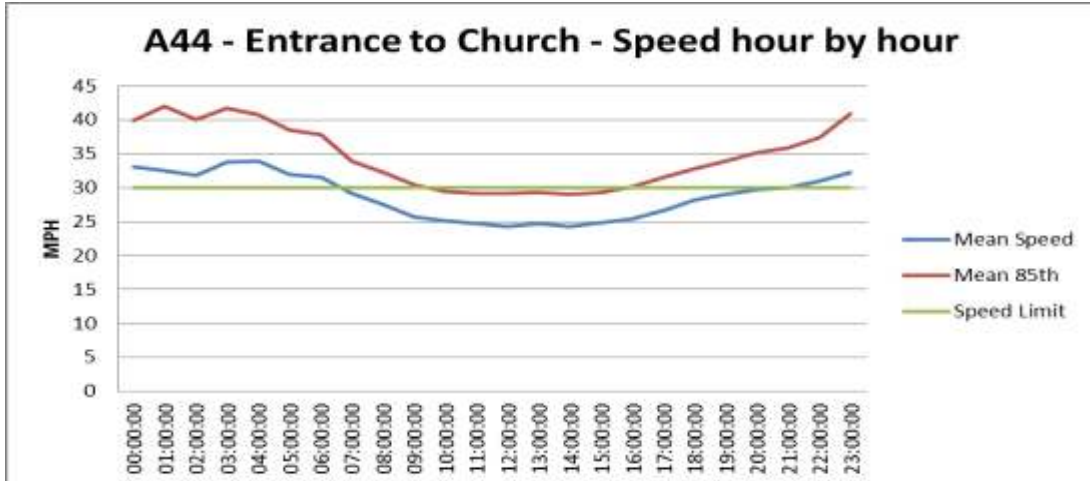


## Traffic Survey Results

<b>Bourton on the Hill</b>			
<b>Traffic Survey, 16th-22nd June 2021</b>			
<b>Site 99186280 A44 - Before B4479</b>			
	(30 mph)		
	<b>E/b</b>	<b>W/b</b>	<b>Combined</b>
Mean speed (mph)	30.0	31.5	31.0
85th %ile speed (mph)	35.0	36.5	36.0
Avg Mon-Fri volume (rounded)	3450	3350	6800
Avg Mon-Sun volume (rounded)	3260	3150	6400
<b>Site 99186279 A44 - Entrance to Church</b>			
	(30 mph)		
	<b>E/b</b>	<b>W/b</b>	<b>Combined</b>
Mean speed (mph)	27.0	26.0	26.5
85th %ile speed (mph)	32.0	31.0	31.5
Avg Mon-Fri volume (rounded)	3400	3240	6650
Avg Mon-Sun volume (rounded)	3200	3050	6250
<b>Site 99186278 A44 - Before Fenhill Close Junction</b>			
	(30 mph)		
	<b>E/b</b>	<b>W/b</b>	<b>Combined</b>
Mean speed (mph)	35.0	33.0	34.0
85th %ile speed (mph)	42.0	40.0	41.0
Avg Mon-Fri volume (rounded)	3420	3270	6690
Avg Mon-Sun volume (rounded)	3220	3080	6300
(volume flows rounded to nearest 10 vehicles)			
<b>Mean speed = average speed</b>			
<b>85th percentile speed = the speed at or below which 85% of all vehicles are observed to travel under free flowing conditions</b>			







### Community Orchard

The gardens and orchard were open to the public as part of the Open Gardens Scheme, feedback was very positive. The allotments are now full with two new people recently taking plots. New applicants will be put on a waiting list. The funds for the Orchard remaining in the accounts is approximately £800.00.

### Meetings for 2021

The following meetings will be held in the Old School Hall at 6.30pm on September 21st, October 26th and December 7th.

### Councillors

The Parish Councillors are Andy Vigrass (Chairman), Liz Bowden (Vice Chairman), Angela Hay, Anna Stanley, Tom Martin & Mark Norton. The Clerk to the Parish Council is Alexia Monroe.

### Phone & Email



The phone number for contacting the clerk: 07594-169499

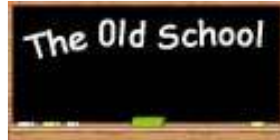


The clerk's email address is [clerk@bourtononthehill.co.uk](mailto:clerk@bourtononthehill.co.uk)

*Alexia Monroe / Andy Vigrass*



## THE OLD SCHOOL



After a prolonged closure due to the Covid pandemic we are pleased that regular bookings are resuming and we have several new groups starting. These include a Tai Chi and Yoga group on Saturday mornings and a drama group for children 3 evenings a week. If you are interested in hiring the hall the current rate is £8 per hour for residents in the village and £10 per hour for non-residents. Contact Sandra Gee 01386 702385.

A new Toddler group will be starting in the lower hall from Monday 6th September. (See separate report from Alix Nicklin.)

We held a Meet the Neighbours drinks party in the car park at the hall on Wednesday 30th June so that new residents could get to know others and old residents could catch up with each other after so many weeks in lockdown. It was a huge success with over 60 people attending and lovely to be able to socialise and meet so many new faces. We hope to get to know everyone better in the coming months.

By popular demand Meet the Neighbours 2 was held on 25th August. Despite the cool, dull evening 45 people enjoyed a drink together in the car park. It was lovely to see new residents, young and old(er.)

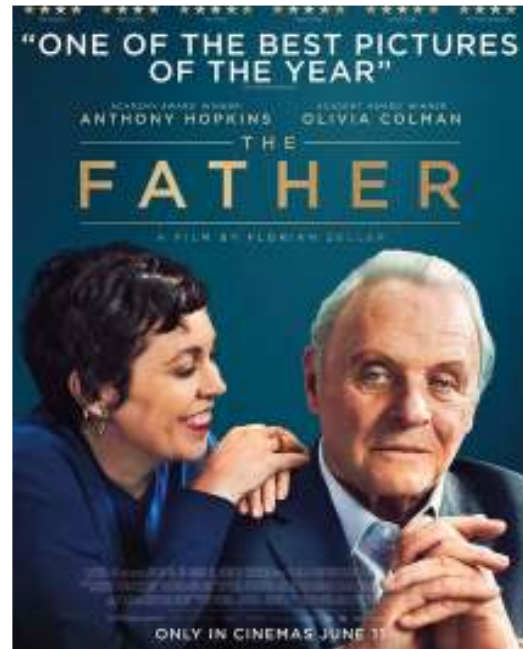
### **Open Gardens**

On Sunday 11th July we held Open Gardens with 11 gardens opening including Bourton House Garden and the Community Garden. Takeaway tea and cakes were served in the hall and enjoyed in the car park. The weather could have been better but we had 196 visitors and raised over **£2,000** for Hall funds, welcome income after a year without!



### **Rural cinema**

We are delighted to announce that Rural Cinema will start again on Saturday 25th September when we will be showing The Father starring Anthony Hopkins and Olivia Coleman.



Doors open at 6.30pm and the film starts at 7.15pm. Tickets, (pay on the door) are £4. Hot dogs and a donation bar will be available.

We plan to restrict numbers and encourage people to wear masks when moving around the hall. Booking is essential. Contact Anne Robertson 01386 701564.

Dates for future film nights are:

- Saturday 30th October
- Saturday 27th November

We hope to have further events in the autumn, depending on what restrictions are in place at the time.

The current committee for the Old School hall is Anne Robertson, Chair, Philip Gee, Vice Chair, Catherine Firth, Treasurer, Sandra Gee,



Secretary and Pat Freeman, Anne-Gaelle Lacondemine and Richard Hemmings.

We would welcome others to join us in helping to maintain the village hall for the use of the community. If interested, please contact any member of the committee.

*Anne Robertson  
(on behalf of the Old School Hall Committee)*

### **BABY & TODDLERS GROUP**

For all under 5s and their grownups. Monday mornings 9:30 - 10:45am downstairs in the old school, Bourton on the Hill. Starting on Monday 6th September, term time only.



Includes a snack for children and tea, coffee & cake for grownups.

No booking required, just turn up and play! £1.50 per child.

Find us on Facebook or contact Alix Nicklin and Jodie Bachelor (both Fenhill Close) [thealix@hotmail.com](mailto:thealix@hotmail.com)

*Alix Nicklin*

### **TAI CHI & AIKIDO**



Classes are in being held at the Old School Hall at the following times:

Tai Chi - Saturdays 9.00 am. Tai Chi means 'great ultimate life energy arriving from emptiness'. Aikido - Mondays 7.30 pm. Aikido is a Japanese derivative art made up of three syllables: 'Ai' meaning universal love 'Ki' meaning energy and 'do' meaning way.

Both are a form of moving meditation and yoga that can be applied directly to one's life

and classes are open to anyone who has an interest in the ancient art of longevity. It is said practitioners will develop the flexibility of a ballerina and strength of lumberjack. Feel free to call or mail me or just turn up and try.

*Vince McLaren*  
07713 455154 or [hari\\_aohm@hotmail.com](mailto:hari_aohm@hotmail.com)

### **COMMUNITY SPEEDWATCH (CSW)**

Over the months of March and April, the B-o-t-H Speed Watch team spent over 21 hours checking the speeds of motorists passing through the village. Nearly 4,500 vehicles were checked of which 47% were found to be speeding; of these, 16% were travelling at speeds of more than 35 mph; the fastest car recorded was travelling at 62mph accelerating into the village.



We are massively grateful to everyone who has engaged with the campaign. In particular we wish to reiterate thanks to those who have pledged money to purchase a speed gun for B-o-t-H; our plans have temporarily been put on hold due to receiving conflicting information from the police regarding the possibility of enforcing (i.e. sending fines and issuing points) through future CSW checks. Until we have the answers, there's little point in purchasing the equipment.

The statistics clearly show that there is a real problem with Bourton's speeding traffic and it is our aim to bring both the police and Highways to the table in order to develop a plan that tackles this major problem.

For further information about CSW or to support the campaign in any way, please email [Camillachandler2018@gmail.com](mailto:Camillachandler2018@gmail.com)

*Adrian Chandler*



## **BOURTON HOUSE GARDEN**

Late summer into autumn is a wonderful time here at Bourton House. With many unusual and exotic plants not bedded out until June the garden tends to come into its peak from late July onwards so if you haven't visited recently do head over!



We consider ourselves very fortunate that covid hasn't adversely affected our visitor numbers and, whilst group bookings are down (particularly our overseas visitors), we've found that locals and holiday makers have more than made up the numbers. In today's strange world, the peace and tranquillity of the garden, feeling safe in the fresh air and of course Carolyn's delicious cakes all make for a wonderful trip out.



We welcomed over 250 visitors to the garden on Sunday 15th August for our annual NGS day – the weather held out for us which made for a very pleasant day raising over £2,000 for

charities including the Macmillan Cancer Support and Marie Curie.

In August we said a fond farewell to gardener Tom who has been with us for three years. We will miss his cheeky sense of humour though not the odd splash from the hosepipe! We wish him all the best in his new role and are looking forward to getting to know his replacement, Glen, who will be joining us in September.



The garden is open Tuesday – Friday 10am until 5pm through until the end of October. The Tithe Barn café and gift shop will close at the end of September. Also, new for this year we now have gift vouchers. From £16 for entry for two to £32 for entry and a cream tea for two, they make a wonderful birthday or special anniversary present or dare I mention the 'C' word...Christmas!

Best wishes from ...

*all at Bourton House Garden*

## **EDUCATIONAL TRUST**

Are you aged under 25?  
If so then the Educational Trust could help you with a grant towards.... swimming lessons? sports kit? books? school uniform? school trips?



We are a village fund that was set up to help anyone from 0-25 years old with their education. We don't need to know anything





about your family circumstances, only what you'd like some money for. All grants are confidential to the Trustees only.

There's more information on the village website, or please talk to one of us: Carlin Anderson, Louise Davis, Dana Delap (vicar), Rupert Crawshaw or myself.

*Catherine Firth (Chair of Trustees)*  
[catherinefirth54@gmail.com](mailto:catherinefirth54@gmail.com)

**QUARRY SERVICE STATION**

The Gulf garage at the top of the hill has changed hands. The new manager has initiated an excellent shop which is serviced by Budgens.



It has a range of fresh vegetables, meat, and has well stocked shelves with a variety of products. There's even freshly squeezed orange juice and a coffee machine.

The new manager has insisted on good quality products and is hoping the shop will be used not just for papers and milk but for buying other goods too.

*Liz Bowden*

**FOOTCARE RECOMMENDATION**

A foot health professional, Paul Brookes, has started visiting Bourton. I and two others have found him extremely efficient, careful and good at his job. He can deal with corns, calluses, in-growing toenails, fungal infections and will trim nails. He gives excellent foot care. Contact details:



Tel. 01451-810981 / 07725-185843

Email: [brookes1977@yahoo.co.uk](mailto:brookes1977@yahoo.co.uk)

*Liz Bowden*

**VACANCY FOR CLERK / RESPONSIBLE FINANCE OFFICER**

Following the retirement after 16 years service, there is now a vacancy for Clerk / RFO at Bourton on the Hill parish Council. The Parish Council is responsible for two bus shelters, grit bins and village benches.

The post is part time, 4 hours a week. The Clerk/RFO will work from home and is expected to attend 6 meetings per year. Applications are invited from proactive individuals, ideally with experience of working in a similar role but training will be provided for the right candidate. The Parish Clerk / RFO will be responsible for the administration of the business and finances of the Parish Council. The successful applicant must be computer literate have strong interpersonal skills and excellent communication and organisational skills. Friendly and positive outlooks are essential.

The salary is SCP range10–13, which equates to £11.08 - £11.76 per hour, depending on experience. More information and job description can be obtained from [www.bourtononthehill.co.uk](http://www.bourtononthehill.co.uk). Please send applications by CV and covering letter to the Chairman, Andy Vigrass by 13th September 2021 at [avigrass@gmail.com](mailto:avigrass@gmail.com).

*Alexia Monroe / Andy Vigrass*

**FOODBANK**

The incredibly challenging year has continued with the North Cotswold Foodbank providing food and household items to 327 adults and 264 children since April 2021.



The new outlet in Stow Baptist Church which opened in April is now busy with a steady flow of clients. Thanks to the generous financial donations we are able to give out fresh bread



from Bourton on the Water bakers and fresh meat vouchers for Walkers Butchers on the High Street in Moreton. We are also able to give out vouchers for the Cotswold Veg Box Company who deliver fresh produce to our clients.

Again because of generous donations we have been able to provide for a Citizen Advice Bureau advisor, Morweena Salmon, to help our clients in Bourton, Stow and Campden. We are looking to extend the hours she has available to include Moreton and Bishops Cleeve.

We are continuing to maintain good working relationship with our referral agencies as they give out vouchers to those in need. These include the GP surgeries, social services, P3, Citizens Advice Bureau (CAB), Christians Against Poverty (CAP) and the school liaison workers especially at Stow, St David's and Chipping Campden.

We look forward to all the generous donations at Harvest which help us prepare for Christmas which is one of our busiest times and to the potatoes provided by The Cotswold Farm Park who support us with their potato patch in September.

If you know of anyone who is in need, please contact us for a confidential discussion and if anyone would like any more information or suggested items to be donated, please visit [www.northcotswold.foodbank.org.uk](http://www.northcotswold.foodbank.org.uk)

*Alexia Monroe*  
*Trustee of the NCFB*

[alexia@northcotswold.foodbank.org.uk](mailto:alexia@northcotswold.foodbank.org.uk)

## THE NEXT ISSUE

.. is due out in November. Please do let us have any articles that you think would be of interest to your neighbours. Items for inclusion should be submitted to me by late October.



*Ailsa Vigrass*

[amvigrass@gmail.com](mailto:amvigrass@gmail.com)